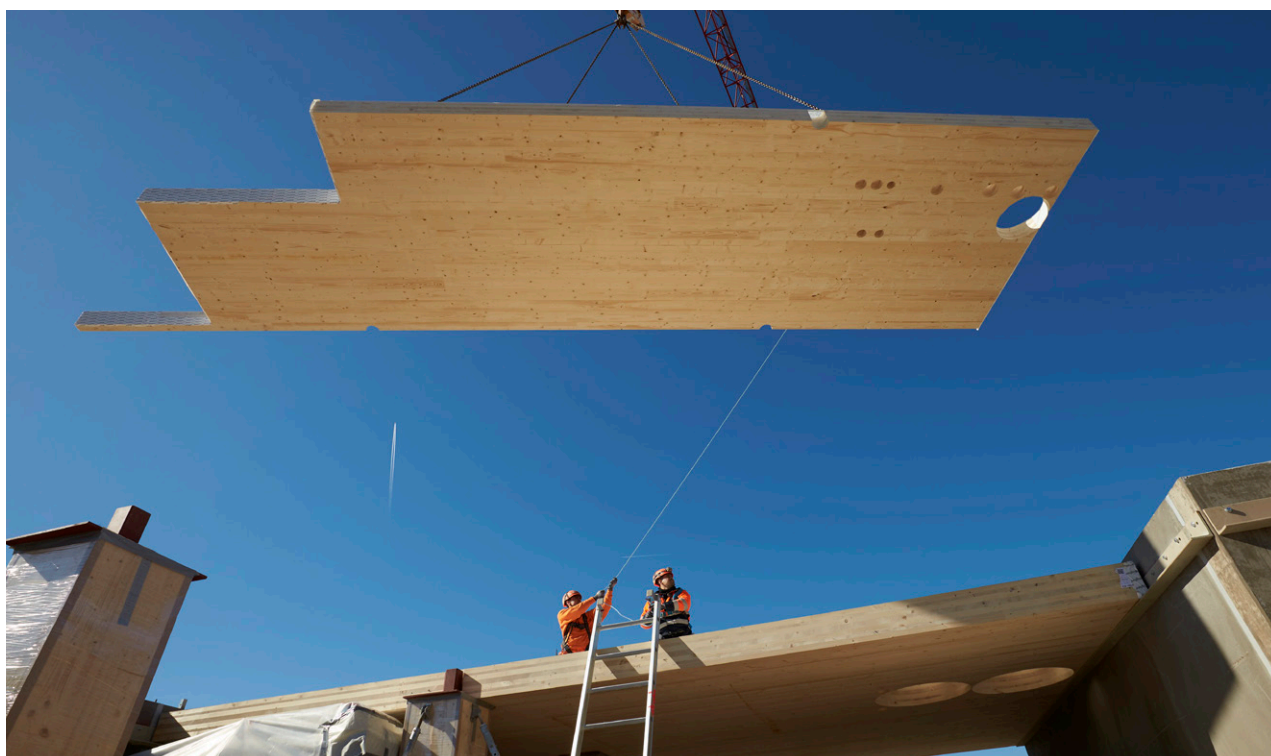








Technical specifications

Cross-laminated timber



A natural material with endless possibilities. Together with our partners, we can create buildings inspired by the forest that promote a sense of tranquillity and well-being. We realise dreams of a sustainable and secure life in buildings based on one of the most sustainable of all sources – our owners' forests.

Technical specifications

Panel width  Panel length 3.500 mm 16.000 mm	Panel thickness  60-280 mm	 Wood type Spruce	 Finger joints Individually finger-jointed lamellas
Structural configuration  3, 5, 7 layers	Density  $P_{mean} = 420 \text{ kg/m}^3$		
Climatic conditions classification According to SS-EN 1995-1-1 Class 1 and 2	Processing technique CNC machining Tolerance $\pm 3 \text{ mm}$	Lamellas 20, 30, 40 mm thickness, C24	
Application Construction material for floors, roofs and walls	Adhesive Formaldehyde-free polyurethane (PUR) adhesive. Complies with SS-EN 14080, type 1, according to SS-EN 15425	Moisture ratio 12% \pm 2%	
Surface NVQ – non-visual quality VQ – visible quality	Panel description 3s – 3 layers 5s – 5 layers 7s – 7 layers S2 – the two outermost layers in the same direction	Certification CLT type-approved type 1 according to EN 16351 Possible to choose certified raw material, FSC® and PEFC	